

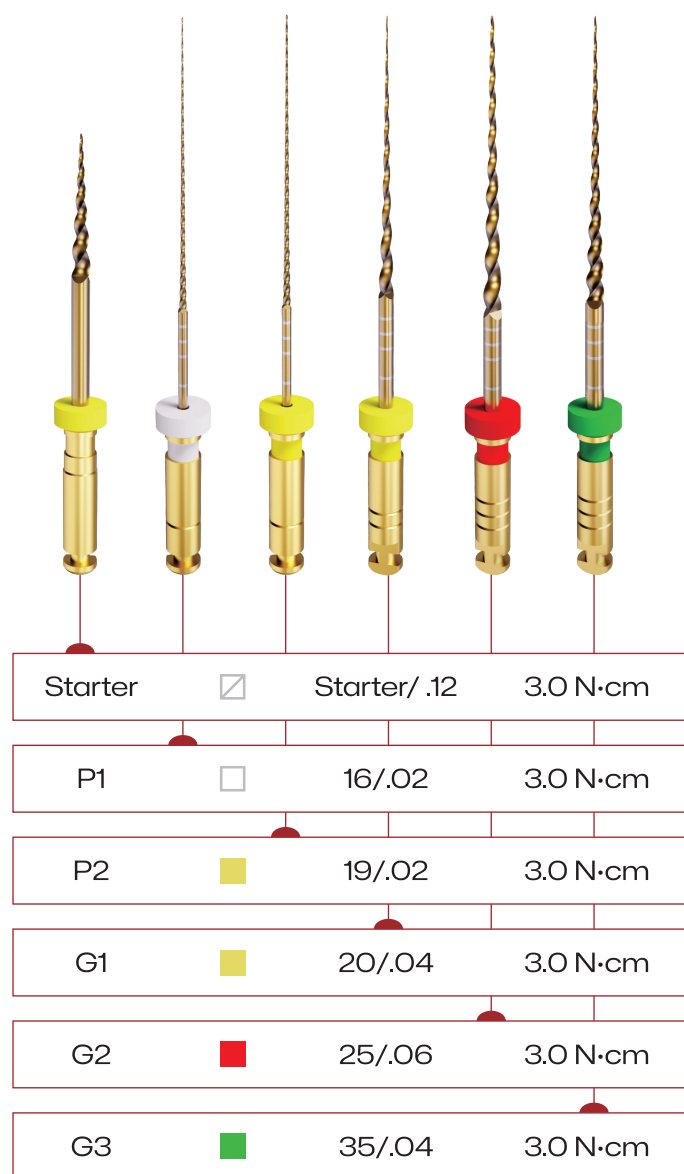
MG3

Easy / Efficient / Safe



Perfect Rotary Instrument

MG3



Cross Section:

Rotary Speed: **350 RPM**

Length: **21mm 25mm 31mm**

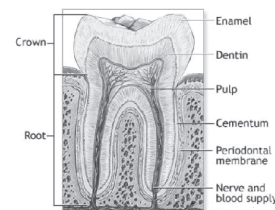
CASES USING MG3



THE INCOMPARABLE CROSS SECTION DESIGN

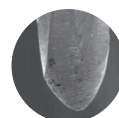
3 major advantages of the MG3 cross section

- ✦ Improved performance
- ✦ Lower tendency to break
- ✦ Clean up debris more thoroughly

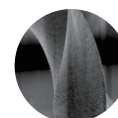


TO BE UNIQUE

- ✦ Incremental thread spacing design makes maximum cutting ability
- ✦ The non-cutting tip guides the instrument better, reduces the risk of step penetration and helps preserve the original shape of the root canal



Non-cutting tip



Incremental thread spacing

OPERATION PROCEDURE

- ✦ Use the K-Files until the working length has been achieved. Irrigate thoroughly with sodium hypochlorite.
- ✦ Glide path preparation with P1, P2 for curved canal if necessary.
- ✦ Dentine removal and shaping with G1 and G2.
- ✦ Use G3 for large canal. EDTA is recommended during treatment.

